

## TOURIST ACCOMMODATION, NORTHERN TERRITORY, DECEMBER QUARTER 1993

\*\*\*\*\*

### MAIN FEATURES

DECEMBER QUARTER 1993  
COMPARED WITH  
DECEMBER QUARTER 1992

#### HOTELS, MOTELS AND GUEST HOUSES

- Rooms available increased by 1.4 per cent from 5,209 to 5,282 while bed spaces decreased slightly from 15,133 to 15,109.
- Room nights occupied increased by 12.9 per cent from 218,930 to 247,180 overall. Increases ranged from 43.5 per cent for Katherine to 3.2 per cent for Darwin City.
- The room occupancy rate overall rose from 46.0 per cent to 50.9 per cent, with Darwin City, Katherine, Alice Springs and Tennant Creek recording increases of 3.8, 8.0, 3.4 and 3.0 percentage points, respectively.
- Guest nights increased by 8.9 per cent from 376,152 to 409,519 and the bed occupancy rate increased from 27.2 per cent to 29.5 per cent.
- Guest arrivals at hotels, motels and guest houses increased by 22.4 per cent from 168,142 to 205,803 while the average length of stay fell from 2.2 to 2.0 days.
- Takings from accommodation increased by 14.3 per cent from \$17.1m to \$19.5m while average takings per room night occupied rose from \$78 to \$79.

#### HOLIDAY FLATS, UNITS AND HOUSES

- The number of units, etc. available for short-term letting at 251 was almost unchanged while unit nights occupied rose by 4.0 per cent from 13,173 to 13,704.
- The unit occupancy rate consequently increased from 57.5 per cent to 60.5 per cent.
- Unit lettings increased by 25.3 per cent from 3,004 to 3,765 and average length of stay dropped from 4.4 days to 3.6 days.
- Accommodation takings increased by 30.2 per cent from \$0.75m to \$0.97m with the average takings per unit night occupied increasing by 25.1 per cent from \$57 to \$71.

#### CARAVAN PARKS

- Caravan park capacity available decreased by 14.6 per cent from 10,427 to 8,900 powered and unpowered sites and cabins, etc. and site nights occupied decreased by 11.8 per cent from 191,166 to 168,516.
- The site occupancy rate rose by 0.7 percentage points to 20.6 per cent.
- Accommodation takings rose by 3.9 per cent from \$1.9m to \$2.0m.

#### VISITOR HOSTELS

- Bed spaces available decreased by 9.8 per cent from 3,318 to 2,994.
- Guest nights sold decreased by 2.8 per cent from 119,930 to 116,606 and the bed occupancy rate decreased from 42.4 per cent to 42.3 per cent.
- Guest arrivals fell from 51,058 to 50,754 and the average length of stay was unchanged at 2.3 days.
- Accommodation takings fell from \$1.5m to \$1.4m and the average takings per guest night sold decreased from \$13 to \$12.

\*\*\*\*\*

#### NOTE

From December quarter 1993, hotels, motels and guest house establishments with fewer than five rooms have been formally excluded from the scope of this statistical collection. This change in scope resulted in the exclusion of one establishment which in the September quarter 1993 Survey aggregates for Northern Territory represented 1.1 per cent of hotel, motel and guest house establishments but accounted for a negligible proportion of accommodation capacity, occupancy and takings.

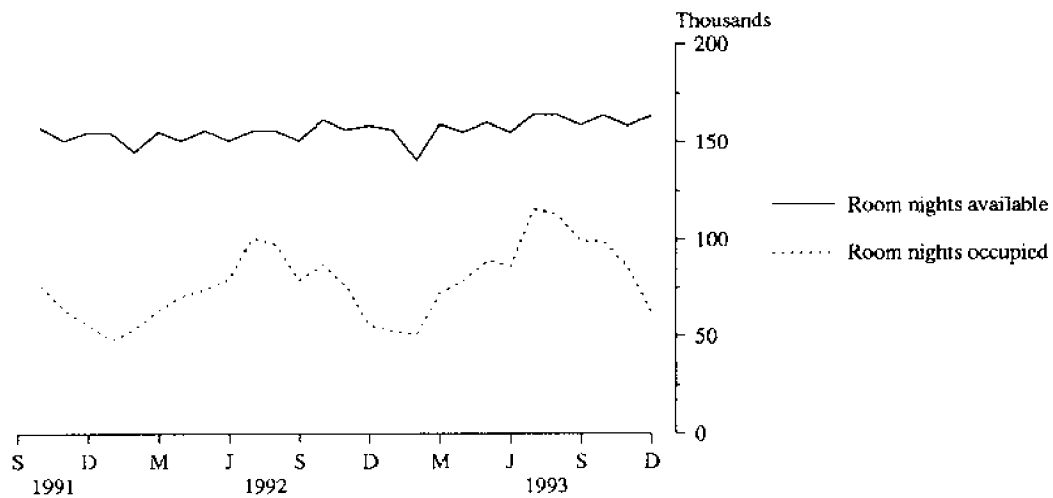
\*\*\*\*\*

#### INQUIRIES

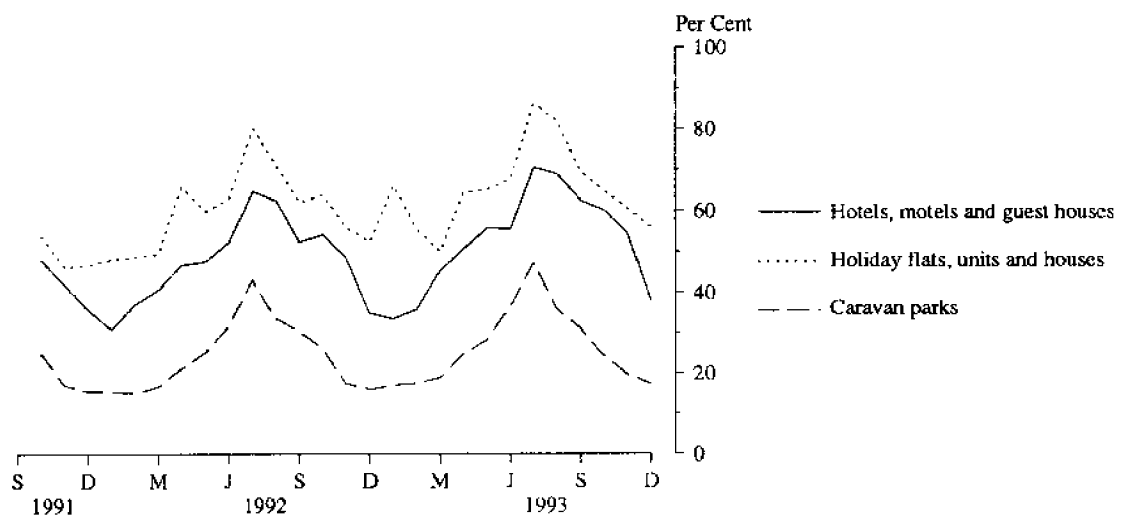
- *for further information about statistics in this publication and the availability of related unpublished statistics, contact Brian Hay on 008 077304 or any ABS office.*
- *for information about other ABS statistics and services, please contact Information Services on Darwin (089) 432 111 or any ABS office.*

\*\*\*\*\*

**MONTHLY ROOM NIGHTS AVAILABLE AND OCCUPIED:  
HOTELS, MOTELS AND GUEST HOUSES,  
NORTHERN TERRITORY**



**MONTHLY OCCUPANCY RATES,  
NORTHERN TERRITORY**



**MONTHLY TAKINGS FROM ACCOMMODATION,  
NORTHERN TERRITORY**

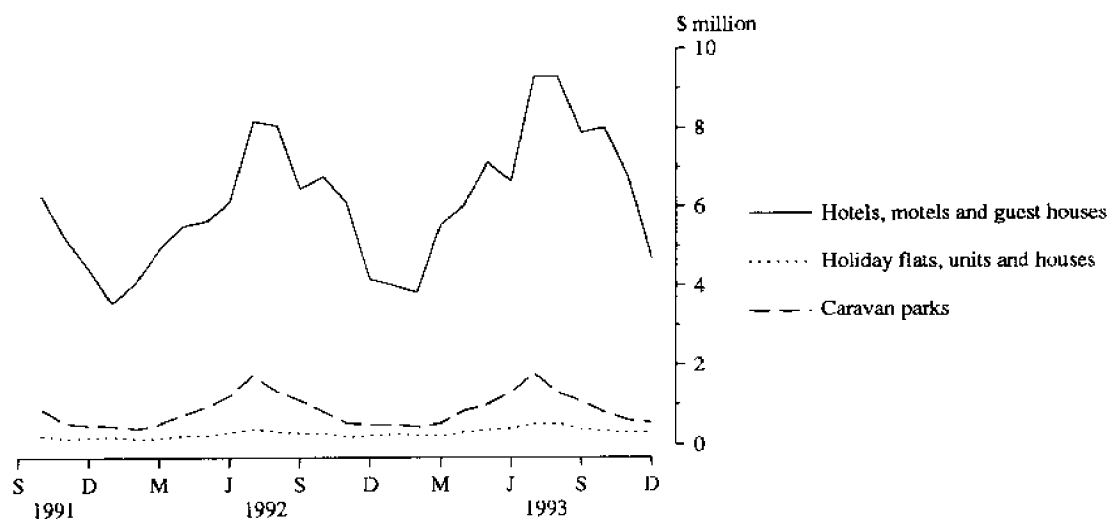


TABLE 1 — SUMMARY OF HOTELS, MOTELS AND GUEST HOUSES WITH FACILITIES, NORTHERN TERRITORY

Particulars	Unit	Quarter ended				Year ended			
		September 1992	December 1992	March 1993	June 1993	September 1993	December 1993	December 1992	December 1993
LICENSED HOTELS WITH FACILITIES									
Establishments	No.	28	30	30	30	30	29	..	..
Guest rooms	No.	1,937	2,005	2,004	2,006	2,005	1,997	..	..
Bed spaces	No.	5,491	5,688	5,711	5,764	5,684	5,626	..	..
Employment (persons)	No.	1,400	1,711	1,663	1,755	1,887	1,801	..	..
Room nights occupied	No.	111,708	97,361	81,406	106,234	126,621	106,056	367,499	420,317
Room occupancy rate	per cent	62.7	52.8	45.2	58.2	68.6	57.7	51.9	57.5
Guest nights	No.	190,860	163,234	135,244	174,898	210,920	171,682	603,560	692,744
Bed occupancy rate	per cent	37.8	31.2	26.3	33.3	40.3	33.2	30.2	33.3
Guest arrivals	No.	85,072	71,338	67,013	87,816	108,674	88,014	278,155	351,517
Average length of stay	days	2.2	2.3	2.0	2.0	1.9	2.0	2.2	2.0
Takings from accommodation	\$'000	11,251	9,272	7,822	10,091	12,842	10,470	35,693	41,224
MOTELS AND GUEST HOUSES WITH FACILITIES									
Establishments	No.	59	61	60	60	63	63	..	..
Guest rooms	No.	3,087	3,204	3,127	3,159	3,290	3,285	..	..
Bed spaces	No.	9,159	9,445	9,287	9,352	9,563	9,483	..	..
Employment (persons)	No.	1,090	870	960	1,018	1,168	1,067	..	..
Room nights occupied	No.	165,454	121,569	94,057	147,981	201,625	141,124	518,379	584,787
Room occupancy rate	per cent	58.3	41.7	34.1	51.5	66.6	46.7	45.3	50.1
Guest nights	No.	304,627	212,918	163,773	265,074	366,629	237,837	911,163	1,033,313
Bed occupancy rate	per cent	36.2	24.8	20.0	31.1	41.7	27.3	27.0	30.2
Guest arrivals	No.	144,088	96,804	74,741	116,851	168,383	117,789	421,751	477,764
Average length of stay	days	2.1	2.2	2.2	2.3	2.2	2.0	2.2	2.2
Takings from accommodation	\$'000	11,482	7,793	5,621	9,760	13,738	9,027	33,967	38,146
TOTAL HOTELS, MOTELS AND GUEST HOUSES WITH FACILITIES									
Establishments	No.	87	91	90	90	93	92	..	..
Guest rooms	No.	5,024	5,209	5,131	5,165	5,295	5,282	..	..
Bed spaces	No.	14,650	15,133	14,998	15,116	15,247	15,109	..	..
Employment (persons)	No.	2,490	2,581	2,623	2,773	3,055	2,868	..	..
Room nights occupied	No.	277,162	218,930	175,463	254,215	328,246	247,180	885,878	1,005,104
Room occupancy rate	per cent	60.0	46.0	38.5	54.1	67.4	50.9	47.9	52.9
Guest nights	No.	495,487	376,152	299,017	439,972	577,549	409,519	1,514,723	1,726,057
Bed occupancy rate	per cent	36.8	27.2	22.5	32.0	41.2	29.5	28.2	31.4
Guest arrivals	No.	229,160	168,142	141,754	204,667	277,057	205,803	699,906	829,281
Average length of stay	days	2.2	2.2	2.1	2.1	2.1	2.0	2.2	2.1
Takings from accommodation	\$'000	22,733	17,064	13,443	19,851	26,579	19,496	69,660	79,370

TABLE 2 — SUMMARY OF CARAVAN PARKS, NORTHERN TERRITORY

Particulars	Unit	Quarter ended						Year ended	
		September	December	March	June	September	December	December	December
		1992	1992	1993	1993	1993	1993	1992	1993
SHORT-TERM CARAVAN PARKS									
Establishments	No.	56	55	55	57	57	55	..	..
Capacity									
On-site vans	No.	82	91	85	94	68	65	..	..
Other powered sites	No.	2,495	2,392	2,366	2,578	2,594	2,553	..	..
Unpowered sites	No.	5,119	4,938	3,715	3,631	3,200	3,127	..	..
Cabins, etc.	No.	149	138	150	157	142	147	..	..
Total capacity	No.	7,845	7,559	6,316	6,460	6,004	5,892	..	..
Sites occupied by long-term guests	No.	187	139	159	211	213	182	..	..
Other sites permanently reserved	No.	—	5	7	4	3	3	..	..
Employment (persons)	No.	301	279	270	249	256	206	..	..
Site nights occupied	No.	212,392	83,585	51,440	127,988	182,568	65,711	513,191	427,707
Site occupancy rate	per cent	29.4	12.0	9.0	22.1	33.2	12.1	17.7	19.1
Takings from accommodation	\$'000	2,730	909	664	1,953	2,725	949	6,357	6,291
LONG-TERM CARAVAN PARKS									
Establishments	No.	23	24	24	24	25	25	..	..
Capacity									
On-site vans	No.	241	238	233	233	245	249	..	..
Other powered sites	No.	1,710	1,846	1,850	1,824	1,851	1,902	..	..
Unpowered sites	No.	696	711	712	722	759	785	..	..
Cabins, etc.	No.	92	73	72	73	78	72	..	..
Total capacity	No.	2,739	2,868	2,867	2,852	2,933	3,008	..	..
Sites occupied by long-term guests	No.	953	937	923	947	911	871	..	..
Other sites permanently reserved	No.	14	1	7	6	5	5	..	..
Employment (persons)	No.	124	99	92	80	94	89	..	..
Site nights occupied	No.	137,055	107,581	97,103	121,591	131,435	102,805	425,226	452,934
Site occupancy rate	per cent	54.4	40.8	37.6	46.9	48.7	37.1	45.8	42.6
Takings from accommodation	\$'000	1,450	986	880	1,209	1,414	1,019	4,067	4,522
TOTAL CARAVAN PARKS									
Establishments	No.	79	79	79	81	82	80	..	..
Capacity									
On-site vans	No.	323	329	318	327	313	314	..	..
Other powered sites	No.	4,205	4,238	4,216	4,402	4,445	4,455	..	..
Unpowered sites	No.	5,815	5,649	4,427	4,353	3,959	3,912	..	..
Cabins, etc.	No.	241	211	222	230	220	219	..	..
Total capacity	No.	10,584	10,427	9,183	9,312	8,937	8,900	..	..
Sites occupied by long-term guests	No.	1,140	1,076	1,082	1,158	1,124	1,053	..	..
Other sites permanently reserved	No.	14	6	14	10	8	8	..	..
Employment (persons)	No.	425	378	362	329	350	295	..	..
Site nights occupied	No.	349,447	191,166	148,543	249,579	314,003	168,516	938,417	880,641
Site occupancy rate	per cent	35.9	19.9	18.0	29.8	38.3	20.6	24.5	26.7
Takings from accommodation	\$'000	4,180	1,895	1,544	3,162	4,140	1,969	10,424	10,814

TABLE 3 — SUMMARY OF HOLIDAY FLATS, UNITS AND HOUSES, NORTHERN TERRITORY

Particulars	Unit	Quarter ended				Year ended			
		September 1992	December 1992	March 1993	June 1993	September 1993	December 1993	December 1992	December 1993
Letting entities	No.	10	10	10	10	10	10	..	..
Flats, units and houses	No.	135	142	141	150	149	143	..	..
Single bedroom	No.	110	107	107	104	105	108	..	..
Multiple bedroom	No.								
Total flats, units and houses	No.	245	249	248	254	254	251	..	..
Bed spaces	No.	995	999	994	1,020	983	1,027	..	..
Employment (persons) (a)	No.	45	49	54	52	54	63	..	..
Unit nights occupied	No.	16,057	13,173	12,803	15,226	18,535	13,704	52,132	60,268
Unit occupancy rate	per cent	71.2	57.5	57.4	65.9	79.3	60.5	60.7	65.9
Unit lettings	No.	4,510	3,004	2,398	3,767	5,329	3,765	13,192	15,259
Average length of stay	days	3.6	4.4	5.3	4.0	3.5	3.6	4.0	3.9
Takings from accommodation	\$'000	1,069	746	750	1,162	1,469	971	3,193	4,353

(a) Employment numbers exclude real estate agents and their employees.

TABLE 4 — SUMMARY OF VISITOR HOSTELS, NORTHERN TERRITORY

Particulars	Unit	Quarter ended				Year ended			
		September 1992	December 1992	March 1993	June 1993	September 1993	December 1993	December 1992	December 1993
Establishments	No.	34	36	37	36	40	39	..	..
Bed spaces	No.	3,114	3,318	3,091	3,164	3,025	2,994	..	..
Employment (persons)	No.	171	163	166	181	176	160	..	..
Guest nights	No.	155,233	119,930	106,305	136,079	169,023	116,606	503,716	528,013
Bed occupancy rate	per cent	54.2	42.4	38.2	47.3	60.7	42.3	45.8	47.1
Guest arrivals	No.	65,182	51,058	43,785	61,466	71,247	50,754	214,930	227,252
Average length of stay	days	2.4	2.3	2.4	2.2	2.4	2.3	2.3	2.3
Takings from accommodation	\$'000	2,076	1,510	1,284	1,605	1,983	1,436	6,577	6,307

TABLE 5 — HOTELS, MOTELS AND GUEST HOUSES WITH FACILITIES BY ESTABLISHMENT SIZE,  
NORTHERN TERRITORY

Particulars	Establishment size (number of rooms)						Northern Territory
	1-9	10-15	16-25	26-50	51-100	101+	
ESTABLISHMENTS, CAPACITY AND EMPLOYMENT							
December quarter 1992—							
Establishments	5	8	19	20	26	13	91
Guest rooms	30	101	387	740	1,911	2,040	5,209
Bed spaces	93	305	1,162	2,159	5,487	5,927	15,133
Employment (persons)	26	91	166	332	800	1,166	2,581
December quarter 1993—							
Establishments	6	8	19	19	27	13	92
Guest rooms	42	101	390	708	2,005	2,036	5,282
Bed spaces	115	290	1,241	2,087	5,488	5,888	15,109
Employment (persons)	38	74	169	351	1,018	1,218	2,868
ROOM NIGHTS OCCUPIED							
December quarter 1992	608	2,491	14,667	26,731	68,324	106,109	218,930
1993—							
October	243	1,426	6,034	11,561	33,756	45,787	98,807
November	291	1,292	4,891	9,904	29,112	40,503	85,993
December	286	1,252	4,397	8,331	21,480	26,634	62,380
December quarter 1993	820	3,970	15,322	29,796	84,348	112,924	247,180
ROOM OCCUPANCY RATES (per cent)							
December quarter 1992	23.6	26.8	41.2	39.3	39.6	56.5	46.0
1993—							
October	18.7	45.5	49.9	52.7	54.3	72.5	60.3
November	23.1	42.6	41.8	46.6	48.4	66.3	54.3
December	22.0	40.0	36.4	38.3	34.6	42.2	38.1
December quarter 1993	21.2	42.7	42.7	45.9	45.7	60.3	50.9
GUEST NIGHTS							
December quarter 1992	1,044	4,198	22,832	45,789	120,332	181,957	376,152
1993—							
October	450	2,173	10,232	20,851	57,242	75,457	166,405
November	485	1,888	8,052	16,646	46,335	64,846	138,252
December	533	2,059	7,517	15,158	35,819	43,776	104,862
December quarter 1993	1,468	6,120	25,801	52,655	139,396	184,079	409,519
BED OCCUPANCY RATES (per cent)							
December quarter 1992	13.1	15.0	21.4	23.1	24.3	33.4	27.2
1993—							
October	12.6	24.2	26.6	32.2	33.6	41.3	35.5
November	14.1	21.7	21.6	26.6	28.1	36.7	30.5
December	15.0	22.9	19.5	23.6	21.1	24.0	22.4
December quarter 1993	13.9	22.9	22.6	27.5	27.6	34.0	29.5
GUEST ARRIVALS							
December quarter 1992	911	3,091	10,582	21,921	53,543	78,094	168,142
1993—							
October	394	1,736	4,509	10,042	28,408	38,683	83,772
November	429	1,242	3,739	7,780	22,504	34,448	70,142
December	489	1,645	3,494	7,354	17,532	21,375	51,889
December quarter 1993	1,312	4,623	11,742	25,176	68,444	94,506	205,803
AVERAGE LENGTH OF STAY (days)							
December quarter 1992	1.1	1.4	2.2	2.1	2.2	2.3	2.2
December quarter 1993	1.1	1.3	2.2	2.1	2.0	1.9	2.0
TAKINGS FROM ACCOMMODATION (\$'000)							
December quarter 1992	25	129	834	1,361	4,344	10,370	17,064
1993—							
October	9	67	346	629	2,281	4,688	8,020
November	11	60	261	502	1,910	4,032	6,775
December	11	59	225	416	1,353	2,637	4,701
December quarter 1993	31	187	832	1,546	5,544	11,357	19,496

TABLE 6A — HOTELS, MOTELS AND GUEST HOUSES WITH FACILITIES BY STAR GRADING BY STATISTICAL DIVISION, NORTHERN TERRITORY

Particulars	Darwin (SD)				Northern Territory - Balance (SD)			
	Star grading			Total	Star grading			Total
	2	3, 4 and 5	Ungraded and 1		2	3, 4 and 5	Ungraded and 1	
ESTABLISHMENTS, CAPACITY AND EMPLOYMENT								
December quarter 1992—								
Establishments	12	10	5	27	19	22	23	64
Guest rooms	533	1,059	137	1,729	748	2,126	606	3,480
Bed spaces	1,605	2,669	337	4,611	2,218	6,605	1,699	10,522
Employment (persons)	193	1,092	19	1,304	261	774	242	1,277
December quarter 1993—								
Establishments	9	8	9	26	29	18	19	66
Guest rooms	442	999	234	1,675	1,349	1,851	407	3,607
Bed spaces	1,299	2,481	690	4,470	3,814	5,663	1,162	10,639
Employment (persons)	235	1,046	87	1,368	446	857	197	1,500
ROOM NIGHTS OCCUPIED								
December quarter 1992	26,591	58,271	5,223	90,085	20,048	94,312	14,485	128,845
1993—								
October	10,230	22,536	4,682	37,448	18,385	38,104	4,870	61,359
November	8,958	19,705	3,890	32,553	14,909	34,121	4,410	53,440
December	6,860	12,697	3,396	22,953	11,197	24,198	4,032	39,427
December quarter 1993	26,048	54,938	11,968	92,954	44,491	96,423	13,312	154,226
ROOM OCCUPANCY RATES (per cent)								
December quarter 1992	54.2	59.8	41.4	56.6	29.1	49.0	26.1	40.7
1993—								
October	74.7	72.8	64.5	72.1	44.0	66.4	38.6	54.9
November	67.6	65.7	55.4	64.8	36.8	61.4	36.1	49.4
December	50.1	41.0	48.2	44.4	26.8	42.2	32.0	35.3
December quarter 1993	64.1	59.8	56.1	60.4	35.8	56.6	35.6	46.5
GUEST NIGHTS								
December quarter 1992	45,009	92,646	7,695	145,350	37,769	168,889	24,144	230,802
1993—								
October	17,956	36,165	7,351	61,472	32,237	63,724	8,972	104,933
November	14,409	30,956	5,975	51,340	23,958	55,157	7,797	86,912
December	11,926	20,686	5,532	38,144	19,176	40,195	7,347	66,718
December quarter 1993	44,291	87,807	18,858	150,956	75,371	159,076	24,116	258,563
BED OCCUPANCY RATES (per cent)								
December quarter 1992	30.5	37.7	24.8	34.3	18.5	28.2	15.5	24.1
1993—								
October	44.6	47.0	34.4	44.4	27.3	36.3	24.9	31.8
November	37.0	41.6	28.9	38.3	20.9	32.5	22.4	27.2
December	29.6	26.9	26.4	27.6	16.2	22.9	20.4	20.2
December quarter 1993	37.1	38.5	29.9	36.7	21.5	30.5	22.6	26.4
GUEST ARRIVALS								
December quarter 1992	14,791	32,128	3,384	50,303	22,494	79,582	15,763	117,839
1993—								
October	6,262	13,872	2,725	22,859	19,909	35,682	5,322	60,913
November	4,994	12,120	2,234	19,348	14,899	31,790	4,105	50,794
December	4,669	7,150	2,285	14,104	11,749	21,710	4,326	37,785
December quarter 1993	15,925	33,142	7,244	56,311	46,557	89,182	13,753	149,492
AVERAGE LENGTH OF STAY (days)								
December quarter 1992	3.0	2.9	2.3	2.9	1.7	2.1	1.5	2.0
December quarter 1993	2.8	2.6	2.6	2.7	1.6	1.8	1.8	1.7
TAKINGS FROM ACCOMMODATION (\$'000)								
December quarter 1992	1,368	4,936	219	6,523	1,061	8,548	932	10,541
1993—								
October	647	2,138	227	3,011	1,056	3,720	232	5,009
November	530	1,817	177	2,523	817	3,253	182	4,252
December	369	1,089	159	1,618	596	2,337	150	3,083
December quarter 1993	1,546	5,044	563	7,153	2,470	9,310	564	12,344

TABLE 6B — HOTELS, MOTELS AND GUEST HOUSES WITH FACILITIES BY STAR GRADING,  
NORTHERN TERRITORY

Particulars	Licensed hotels with facilities	Motels and guest houses	Star grading					Northern Territory
			1	2	3	4 and 5	Ungraded	
ESTABLISHMENTS, CAPACITY AND EMPLOYMENT								
December quarter 1992—								
Establishments	30	61	10	31	26	6	18	91
Guest rooms	2,005	3,204	237	1,281	2,088	1,097	506	5,209
Bed spaces	5,688	9,445	667	3,823	6,193	3,081	1,369	15,133
Employment (persons)	1,711	870	85	454	778	1,088	176	2,581
December quarter 1993—								
Establishments	29	63	14	38	21	5	14	92
Guest rooms	1,997	3,285	344	1,791	1,863	987	297	5,282
Bed spaces	5,626	9,483	1,017	5,113	5,433	2,711	835	15,109
Employment (persons)	1,801	1,067	126	681	856	1,047	158	2,868
ROOM NIGHTS OCCUPIED								
December quarter 1992	97,361	121,569	6,849	46,639	96,390	56,193	12,859	218,930
1993—								
October	41,916	56,891	5,440	28,615	39,176	21,464	4,112	98,807
November	36,630	49,363	4,789	23,867	35,258	18,568	3,511	85,993
December	27,510	34,870	4,324	18,057	23,793	13,102	3,104	62,380
December quarter 1993	106,056	141,124	14,553	70,539	98,227	53,134	10,727	247,180
ROOM OCCUPANCY RATES (per cent)								
December quarter 1992	52.8	41.7	31.4	39.6	51.0	55.7	27.7	46.0
1993—								
October	67.7	55.9	51.0	51.5	67.8	70.2	44.7	60.3
November	61.1	50.1	46.4	44.4	63.1	62.7	39.4	54.3
December	44.4	34.3	40.5	32.5	41.2	42.8	34.5	38.1
December quarter 1993	57.7	46.7	46.0	42.8	57.3	58.5	39.6	50.9
GUEST NIGHTS								
December quarter 1992	163,234	212,918	12,847	82,778	167,963	93,572	18,992	376,152
1993—								
October	68,303	98,102	9,931	50,193	66,056	33,833	6,392	166,405
November	58,947	79,305	8,563	38,367	57,368	28,745	5,209	138,252
December	44,432	60,430	8,168	31,102	40,461	20,420	4,711	104,862
December quarter 1993	171,682	237,837	26,662	119,662	163,885	82,998	16,312	409,519
BED OCCUPANCY RATES (per cent)								
December quarter 1992	31.2	24.8	20.9	23.5	30.0	33.0	15.2	27.2
1993—								
October	39.2	33.4	31.5	31.7	39.2	40.3	24.7	35.5
November	34.9	27.9	28.1	25.0	35.2	35.3	20.8	30.5
December	25.5	20.6	25.9	19.6	24.0	24.3	18.5	22.4
December quarter 1993	33.2	27.3	28.5	25.4	32.8	33.3	21.4	29.5
GUEST ARRIVALS								
December quarter 1992	71,338	96,804	7,971	37,285	74,002	37,708	11,176	168,142
1993—								
October	35,405	48,367	4,477	26,171	33,253	16,301	3,570	83,772
November	30,987	39,155	3,517	19,893	28,321	15,589	2,822	70,142
December	21,622	30,267	3,832	16,418	18,987	9,873	2,779	51,889
December quarter 1993	88,014	117,789	11,826	62,482	80,561	41,763	9,171	205,803
AVERAGE LENGTH OF STAY (days)								
December quarter 1992	2.3	2.2	1.6	2.2	2.3	2.5	1.7	2.2
December quarter 1993	2.0	2.0	2.3	1.9	2.0	2.0	1.8	2.0
TAKINGS FROM ACCOMMODATION (\$'000)								
December quarter 1992	9,272	7,793	256	2,429	7,270	6,213	895	17,064
1993—								
October	4,273	3,747	219	1,703	3,406	2,453	240	8,020
November	3,623	3,152	161	1,347	2,925	2,145	198	6,775
December	2,573	2,128	148	966	1,938	1,488	161	4,701
December quarter 1993	10,470	9,027	527	4,016	8,269	6,086	599	19,496



**TABLE 7 — HOTELS, MOTELS AND GUEST HOUSES WITH FACILITIES BY SELECTED LOCAL GOVERNMENT AREAS,  
NORTHERN TERRITORY**

<i>Particulars</i>	<i>Darwin City (a)</i>	<i>Alice Springs (T)</i>	<i>Katherine (T)</i>	<i>Tennant Creek (T)</i>
<b>ESTABLISHMENTS, CAPACITY AND EMPLOYMENT</b>				
<i>December quarter 1992—</i>				
Establishments	27	20	8	4
Guest rooms	1,729	1,526	412	176
Bed spaces	4,611	4,576	1,302	460
Employment (persons)	1,304	429	115	35
<i>December quarter 1993—</i>				
Establishments	26	22	8	4
Guest rooms	1,675	1,615	475	185
Bed spaces	4,470	4,820	1,315	490
Employment (persons)	1,368	486	166	42
<b>ROOM NIGHTS OCCUPIED</b>				
<i>December quarter 1992</i>	<i>90,085</i>	<i>58,670</i>	<i>12,317</i>	<i>4,604</i>
<i>1993—</i>				
October	37,448	27,663	7,154	1,988
November	32,553	23,643	5,857	1,877
December	22,953	15,863	4,668	1,483
<i>December quarter 1993</i>	<i>92,954</i>	<i>67,169</i>	<i>17,679</i>	<i>5,348</i>
<b>ROOM OCCUPANCY RATES (per cent)</b>				
<i>December quarter 1992</i>	<i>56.6</i>	<i>41.8</i>	<i>32.5</i>	<i>28.4</i>
<i>1993—</i>				
October	72.1	55.3	48.6	34.7
November	64.8	48.8	41.1	33.8
December	44.4	31.7	31.7	25.9
<i>December quarter 1993</i>	<i>60.4</i>	<i>45.2</i>	<i>40.5</i>	<i>31.4</i>
<b>GUEST NIGHTS</b>				
<i>December quarter 1992</i>	<i>145,350</i>	<i>104,295</i>	<i>19,392</i>	<i>8,363</i>
<i>1993—</i>				
October	61,472	46,604	10,959	3,353
November	51,340	36,942	8,592	2,938
December	38,144	25,258	7,143	2,908
<i>December quarter 1993</i>	<i>150,956</i>	<i>108,804</i>	<i>26,694</i>	<i>9,199</i>
<b>BED OCCUPANCY RATES (per cent)</b>				
<i>December quarter 1992</i>	<i>34.3</i>	<i>24.8</i>	<i>16.2</i>	<i>19.8</i>
<i>1993—</i>				
October	44.4	31.2	26.9	22.1
November	38.3	25.5	21.8	20.0
December	27.6	16.9	17.5	19.1
<i>December quarter 1993</i>	<i>36.7</i>	<i>24.5</i>	<i>22.1</i>	<i>20.4</i>
<b>GUEST ARRIVALS</b>				
<i>December quarter 1992</i>	<i>50,303</i>	<i>45,570</i>	<i>11,100</i>	<i>6,662</i>
<i>1993—</i>				
October	22,859	23,740	5,089	2,585
November	19,348	20,092	3,922	2,116
December	14,104	12,758	3,118	2,311
<i>December quarter 1993</i>	<i>56,311</i>	<i>56,590</i>	<i>12,129</i>	<i>7,012</i>
<b>AVERAGE LENGTH OF STAY (days)</b>				
<i>December quarter 1992</i>	<i>2.9</i>	<i>2.3</i>	<i>1.7</i>	<i>1.3</i>
<i>December quarter 1993</i>	<i>2.7</i>	<i>1.9</i>	<i>2.2</i>	<i>1.3</i>
<b>TAKINGS FROM ACCOMMODATION (\$'000)</b>				
<i>December quarter 1992</i>	<i>6,523</i>	<i>4,145</i>	<i>601</i>	<i>250</i>
<i>1993—</i>				
October	3,011	1,916	342	111
November	2,523	1,593	269	97
December	1,618	1,018	224	80
<i>December quarter 1993</i>	<i>7,153</i>	<i>4,528</i>	<i>834</i>	<i>287</i>

(a) As there are no in-scope establishments outside the Darwin City boundaries, data for Darwin City are the same as for the Darwin Statistical Division.

TABLE 8 — HOLIDAY FLATS AND UNITS BY STATISTICAL DIVISION, NORTHERN TERRITORY

<i>Particulars</i>	<i>Darwin (SD)</i>	<i>Northern Territory - Balance (SD)</i>	<i>Northern Territory</i>
LETTING ENTITIES, CAPACITY AND EMPLOYMENT			
<i>December quarter 1992—</i>			
Letting entities	6	4	10
Flats, units and houses			
Single bedroom	79	63	142
Multiple bedroom	91	16	107
<i>Total flats, units and houses</i>	<i>170</i>	<i>79</i>	<i>249</i>
Bed spaces	660	339	999
Employment (persons) (a)	37	12	49
<i>December quarter 1993—</i>			
Letting entities	6	4	10
Flats, units and houses			
Single bedroom	73	70	143
Multiple bedroom	94	14	108
<i>Total flats, units and houses</i>	<i>167</i>	<i>84</i>	<i>251</i>
Bed spaces	652	375	1,027
Employment (persons) (a)	41	22	63
UNIT NIGHTS OCCUPIED			
<i>December quarter 1992</i>	<i>9,381</i>	<i>3,792</i>	<i>13,173</i>
<i>1993—</i>			
October	3,298	1,621	4,919
November	2,901	1,536	4,437
December	3,114	1,234	4,348
<i>December quarter 1993</i>	<i>9,313</i>	<i>4,391</i>	<i>13,704</i>
UNIT OCCUPANCY RATES (per cent)			
<i>December quarter 1992</i>	<i>60.0</i>	<i>52.2</i>	<i>57.5</i>
<i>1993—</i>			
October	63.7	67.9	65.0
November	57.9	66.5	60.6
December	60.2	47.4	55.9
<i>December quarter 1993</i>	<i>60.6</i>	<i>60.1</i>	<i>60.5</i>
UNIT LETTINGS			
<i>December quarter 1992</i>	<i>1,280</i>	<i>1,724</i>	<i>3,004</i>
<i>1993—</i>			
October	566	793	1,359
November	527	727	1,254
December	611	541	1,152
<i>December quarter 1993</i>	<i>1,704</i>	<i>2,061</i>	<i>3,765</i>
AVERAGE LENGTH OF STAY (days)			
<i>December quarter 1992</i>	<i>7.3</i>	<i>2.2</i>	<i>4.4</i>
<i>1993—</i>			
October	5.8	2.0	3.6
November	5.5	2.1	3.5
December	5.1	2.3	3.8
<i>December quarter 1993</i>	<i>5.5</i>	<i>2.1</i>	<i>3.6</i>
TAKINGS FROM ACCOMMODATION (\$'000)			
<i>December quarter 1992</i>	<i>562</i>	<i>185</i>	<i>746</i>
<i>1993—</i>			
October	240	108	348
November	212	110	323
December	223	78	301
<i>December quarter 1993</i>	<i>675</i>	<i>296</i>	<i>971</i>

(a) Employment numbers exclude real estate agents and their employees.

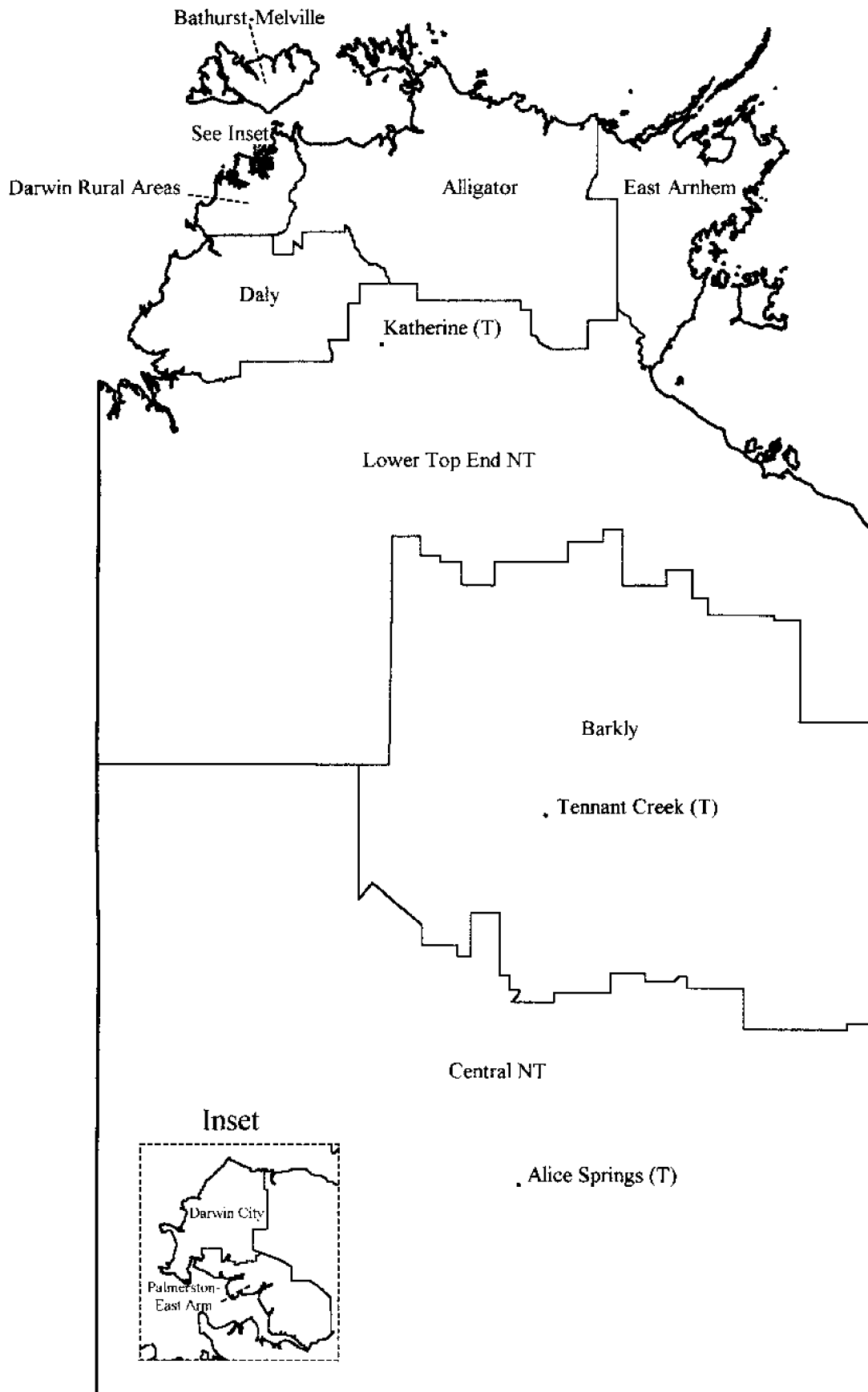
TABLE 9 — CARAVAN PARKS BY STATISTICAL AREA AND TYPE, NORTHERN TERRITORY

Particulars	Darwin (SD) and Alligator (SSD)	Darwin Rural Areas and Daly (SSDs)	Lower Top End Northern Territory (SSD)	Barkly (SSD)	Central Northern Territory (SSD)	Northern Territory		Total
						Short-term parks	Long-term parks	
ESTABLISHMENTS, CAPACITY AND EMPLOYMENT								
December quarter 1992—								
Establishments	10	16	22	10	21	55	24	79
Capacity								
On-site vans	26	153	13	22	115	91	238	329
Other powered sites	1,089	703	838	316	1,292	2,392	1,846	4,238
Unpowered sites	319	457	799	411	3,663	4,938	711	5,649
Cabins, flats, etc.	25	27	46	31	82	138	73	211
Total capacity	1,459	1,340	1,696	780	5,152	7,559	2,868	10,427
Sites occupied by long-term guests	357	286	63	15	355	139	937	1,076
Other sites permanently reserved	—	5	—	—	1	5	1	6
Employment (persons)	35	62	111	42	128	279	99	378
December quarter 1993—								
Establishments	10	18	23	10	19	55	25	80
Capacity								
On-site vans	27	162	13	22	90	65	249	314
Other powered sites	1,243	757	895	328	1,232	2,553	1,902	4,455
Unpowered sites	418	427	939	394	1,734	3,127	785	3,912
Cabins, flats, etc.	31	33	45	28	82	147	72	219
Total capacity	1,719	1,379	1,892	772	3,138	5,892	3,008	8,900
Sites occupied by long-term guests	353	278	82	20	320	182	871	1,053
Other sites permanently reserved	—	2	1	1	4	3	5	8
Employment (persons)	37	60	84	35	79	206	89	295
SITE NIGHTS OCCUPIED								
December quarter 1992	49,825	32,378	13,851	7,020	88,092	83,585	107,581	191,166
1993—								
October	18,855	11,172	8,155	2,826	26,458	30,382	37,084	67,466
November	14,717	10,627	6,657	1,881	19,055	19,348	33,589	52,937
December	13,630	10,036	5,130	1,721	17,596	15,981	32,132	48,113
December quarter 1993	47,202	31,835	19,942	6,428	63,109	65,711	102,805	168,516
SITE OCCUPANCY RATES (per cent)								
December quarter 1992	37.1	26.3	8.9	9.8	18.6	12.0	40.8	19.9
1993—								
October	35.4	26.1	13.9	11.8	27.2	16.6	39.8	24.5
November	28.5	25.7	11.7	8.1	20.2	10.9	37.2	19.8
December	25.6	23.5	8.7	7.2	18.1	8.7	34.5	17.4
December quarter 1993	29.8	25.1	11.5	9.1	21.9	12.1	37.1	20.6
TAKINGS FROM ACCOMMODATION (\$'000)								
December quarter 1992	384	349	177	87	898	909	986	1,895
1993—								
October	163	129	104	41	374	440	370	811
November	124	121	80	29	256	280	331	610
December	110	116	62	25	235	229	318	548
December quarter 1993	397	365	246	95	865	949	1,019	1,969

TABLE 10 — VISITOR HOSTELS BY STATISTICAL DIVISION, NORTHERN TERRITORY

<i>Particulars</i>	<i>Darwin (SD)</i>	<i>Northern Territory - Balance (SD)</i>	<i>Northern Territory</i>
ESTABLISHMENTS, CAPACITY AND EMPLOYMENT			
<i>December quarter 1992—</i>			
Establishments	15	21	36
Bed spaces	1,231	2,087	3,318
Employment (persons)	50	113	163
<i>December quarter 1993—</i>			
Establishments	14	25	39
Bed spaces	1,297	1,697	2,994
Employment (persons)	58	102	160
GUEST NIGHTS			
<i>December quarter 1992</i>	<i>49,486</i>	<i>70,444</i>	<i>119,930</i>
<i>1993—</i>			
October	21,458	25,424	46,882
November	15,083	23,249	38,332
December	12,806	18,586	31,392
<i>December quarter 1993</i>	<i>49,347</i>	<i>67,259</i>	<i>116,606</i>
BED OCCUPANCY RATES (per cent)			
<i>December quarter 1992</i>	<i>44.1</i>	<i>41.2</i>	<i>42.4</i>
<i>1993—</i>			
October	53.4	48.3	50.5
November	38.8	45.7	42.7
December	31.9	35.3	33.8
<i>December quarter 1993</i>	<i>41.4</i>	<i>43.1</i>	<i>42.3</i>
GUEST ARRIVALS			
<i>December quarter 1992</i>	<i>12,841</i>	<i>38,217</i>	<i>51,058</i>
<i>1993—</i>			
October	6,873	12,944	19,817
November	5,108	11,926	17,034
December	4,230	9,673	13,903
<i>December quarter 1993</i>	<i>16,211</i>	<i>34,543</i>	<i>50,754</i>
AVERAGE LENGTH OF STAY (days)			
<i>December quarter 1992</i>	<i>3.9</i>	<i>1.8</i>	<i>2.3</i>
<i>1993—</i>			
October	3.1	2.0	2.4
November	3.0	1.9	2.3
December	3.0	1.9	2.3
<i>December quarter 1993</i>	<i>3.0</i>	<i>1.9</i>	<i>2.3</i>
TAKINGS FROM ACCOMMODATION (\$'000)			
<i>December quarter 1992</i>	<i>536</i>	<i>974</i>	<i>1,510</i>
<i>1993—</i>			
October	227	355	583
November	160	320	480
December	136	237	373
<i>December quarter 1993</i>	<i>524</i>	<i>912</i>	<i>1,436</i>

# Northern Territory Statistical Subdivisions



0 300  
Kilometres

## EXPLANATORY NOTES

\*\*\*\*\*

### INTRODUCTION

1 This publication contains data for Northern Territory from a quarterly survey of tourist accommodation establishments. The period covered by the latest survey is the 3 months ended 31 December 1993.

### SCOPE

2 Tourist accommodation establishments currently included in the survey comprise two groups:

- Establishments which provide predominantly short-term accommodation (i.e. for periods of less than 2 months) to the general public. These include:

*Hotels, motels and guest houses, with facilities* being hotels licensed to operate a public bar and motels, private hotels and guest houses all of which provide a bath (or shower) and toilet in most guest rooms and have breakfast available for guests.

NOTE: From December quarter 1993, hotel, motel and guest house establishments with fewer than five rooms have been formally excluded from the scope of this statistical collection. This change in scope resulted in the exclusion of one establishment which in the September quarter 1993 Survey aggregates for Northern Territory represented 1.1 per cent of hotel, motel and guest house establishments but accounted for a negligible proportion of accommodation capacity, occupancy and takings.

*Holiday flats, units and houses* (excluding establishments predominantly operated on a time share basis) which are operated by owners or managers who have sole letting rights to at least five flats, units or houses or by real estate agents for short-term letting. They are mainly self-contained in terms of cooking, bath (or shower) and toilet facilities and do not have breakfast available for guests. Data for holiday flats, units and houses include short-term owner occupation as well as paying guest occupation.

*Visitor hostels* which provide accommodation to visitors on a bed basis (rather than by the room). This category does not include establishments providing charity type accommodation (e.g. Salvation Army hostels) nor hotels, motels and guest houses without in-room facilities which provide accommodation on a per room basis.

- *Caravan parks* which provide either predominantly short-term (i.e. for periods of less than 2 months) or predominantly long-term (i.e. for periods of 2 months or more) accommodation to the general public and which provide powered sites for caravans and toilet, shower and laundry facilities for guests.

3 Data collected and published for each type of establishment (other than holiday flats, units and houses) include both long-term and short-term guests at these establishments.

4 Establishments which provide more than one type of accommodation (e.g. a motel with attached caravan park) are treated as two or more separate establishments. However, self-contained units, flats, cabins, etc. attached to hotels, motels or to caravan parks are included in the capacity for those establishments and not treated as separate holiday flat, unit or house establishments.

### DEFINITIONS

5 *Number of establishments.* For hotels, motels and guest houses, caravan parks and visitor hostels, the number of establishments within the scope of the survey which operated for any part of the survey period, or which closed temporarily for the quarter for seasonal reasons.

6 *Number of letting entities.* For holiday flats, units and houses, the number of owners, managers or real estate agents within the scope of the survey who operated for any part of the survey period.

7 Capacity in terms of *Guest rooms, Bed spaces, Holiday units* or *Caravan park sites, etc.* is the maximum number available to accommodate paying guests during the survey period. Capacity closed temporarily for seasonal reasons is included.

8 *Bed spaces.* Three-quarter beds are counted as one bed space; double beds as two bed spaces. Cots are excluded.

9 *Total caravan park capacity* comprises *On-site vans, Other powered sites, Unpowered sites* and *Cabins, etc.*

\*\*\*\*\*

## EXPLANATORY NOTES—continued

## DEFINITIONS—continued

10 *Room nights available.* The number of guest rooms available multiplied by the number of days for which they were available during the survey period. Includes operating periods only for establishments closing (other than for seasonal reasons) or opening during the survey period.

11 Occupancy in terms of *Room nights*, *Unit nights* or *Site nights occupied* refers to the total number of nights each guest room, holiday unit or caravan park site, etc. was occupied during the survey period.

NOTE: From September quarter 1992, caravan park sites, etc. permanently reserved for 2 months or more at the end of the survey period but only casually occupied by their tenants have been recorded continuously as *Site nights occupied* irrespective of whether the tenants of individual sites were in residence on any particular night. (See also paragraph 14 below). Previously, usage of these sites was recorded as *Site nights occupied* only when their tenants were in the park.

12 Occupancy in terms of *Guest nights* refers to the total number of nights each paying guest stayed during the survey period.

13 *Sites occupied by long-term guests.* The total number of sites, etc. occupied at the end of the survey period by guests who have stayed continuously for 2 months or more.

14 *Other sites permanently reserved.* The total number of powered and unpowered sites, on-site vans and cabins, etc. continuously let for 2 months or more by the end of the survey period to tenants who occupy the sites only on a casual or sporadic basis. Separate data for this item are available only from September quarter 1992.

15 *Occupancy rates* represent occupancy expressed as a percentage of total capacity available during the survey period - e.g.

$$\text{Room occupancy rate (\%)} \text{ for the period} = \frac{\text{Room nights occupied}}{(\text{Guest rooms}) \times (\text{No. of days in the period})} \times 100$$

providing that, for establishments closing (other than for seasonal reasons) or opening during the period, the denominator of the above expression includes only operating periods.

16 *Guest arrivals.* The total number of paying guests counted only on the first night they stayed at the accommodation establishment.

17 *Unit lettings.* The total number of times a holiday flat, unit or house was occupied by a new tenant, counted only on the first night it was occupied by the new tenant.

18 *Average length of stay* is expressed in number of days and calculated:

- for hotels, motels and guest houses and for visitor hostels, by dividing *Guest nights* by *Guest arrivals* and
- for holiday flats, units and houses, by dividing *Unit nights occupied* by *Unit lettings*.

19 *Takings from accommodation.* Revenue received from the provision of accommodation. Takings from meals are excluded. Takings from accommodation for each month generally represent the takings received during that month. Where payments are received in advance of, or after, the provision of accommodation to guests, the monthly figure for takings from accommodation may not necessarily bear a direct relationship to the number of guests accommodated during the month. Rental and storage fees paid to caravan parks for the keeping of private vans in parks are included in the takings of the month they are received.

20 *Star grading.* The grading of hotels and motels with facilities based on the classification system used by members of the Australian Automobile Association (AAA). The gradings are allocated according to a points system based on the amenities and facilities available to guests. Details of the grading scheme are contained in the RACV-RAASA members' publication *Accommodation Australia*, or the individual tour guides produced by members of the AAA. For the purpose of classifying establishments to a star grading in this publication, 'half' star gradings are ignored (e.g. a two and a half star grading has been shown as two star).

## EXPLANATORY NOTES—continued

\*\*\*\*\*

## DEFINITIONS—continued

21 *Employment.* The number of persons working at accommodation establishments at the end of the survey period (including working proprietors and those working on other than accommodation activities).

AUSTRALIAN STANDARD  
GEOGRAPHICAL  
CLASSIFICATION

22. Statistics presented in this publication have been classified according to the Australian Standard Geographical Classification (ASGC), Edition 2.3. This classification incorporates a number of hierarchic structures of geographic areas. The appropriate spatial units of the main structure of the ASGC used in this publication are:

*Statistical Local Areas (SLAs)* which are legal Local Government Areas or equivalent spatial units which serve as the smallest type of spatial unit considered appropriate for the presentation of statistics which add, without gaps or overlaps, to;

*Statistical Subdivisions (SSDs)* which in turn represent another, higher hierarchic level and add, without gaps or overlaps, to;

*Statistical Divisions (SDs)* which in turn add, without gaps or overlaps, to;

*The Northern Territory.*

For more detailed information, refer to the ASGC (1216.0).

The Northern Territory comprises three SDs, i.e. Darwin, Northern Territory Balance, and Offshore Areas and Migratory. Only the first two of these units are appropriate for the presentation of statistics in this publication and together add to the Northern Territory.

## UNPUBLISHED STATISTICS

23 The ABS may make available on request certain unpublished tourist accommodation statistics. A charge may be made for this information.

## RELATED PUBLICATIONS

24 Publications for Australia, and each State and Territory, are released by the respective offices of the ABS. Tourist accommodation statistics for past quarters are available on request.

25 Other ABS publications which may be of interest include:

*Directory of Tourism Statistics, 1991* (1130.0) (irregular)

*Overseas Arrivals and Departures, Australia* (3401.0) (monthly)

*Tourist Accommodation, Australia* (8635.0) (quarterly)

*Selected Accommodation Establishments, Australia, 1984-85* (8636.0) (irregular)

26 Current publications produced by the ABS are listed in the *Catalogue of Publications and Products* (1101.0). The ABS also issues the *Publications Advice* (1105.0) on Tuesdays and Fridays which lists publications to be released in the next few days. Both the *Catalogue* and *Publications Advice* are available from any ABS office.

SYMBOLS AND  
OTHER USAGES

n.a. not available  
.. not applicable  
— nil or rounded to zero  
(T) Town

27 Where figures have been rounded, discrepancies may occur between totals and the sums of the component items.

81 Smith Street  
DARWIN NT 0800  
9 March 1994

BOB HARRISON  
Statistician, Northern Territory

© Commonwealth of Australia 1994



2863570006937  
ISSN 0157-1354

Recommended retail price: \$15.00

\*\*\*\*\*